

Precision in clamping technology

Pricelist

We place high demands.



Especially on ourselves.



Economical, flexible, high-quality solutions – you can count on these with Stolle. From the manufacture of the cast through development and planning to production with CNC-controlled machines, we provide you with complete clamping technology solutions from a single source. The wide range of possibilities we offer, provides you with numerous options in all aspects of cast iron plate manufacture.

Thanks to our extensive experience in the field of clamping technology, we are able to offer high-precision solutions to fully satisfy even your highest demands. This catalogue offers you the right products to meet your demands. Our own capacity is adjusted to ensure that we can also handle large orders from key accounts in the ideal manner with guaranteed delivery deadlines.

As a family owned company now in its fourth generation, with more than 110 years of tradition and experience in clamping technology, we know our business just as well as we know your demands. You can rely on that!

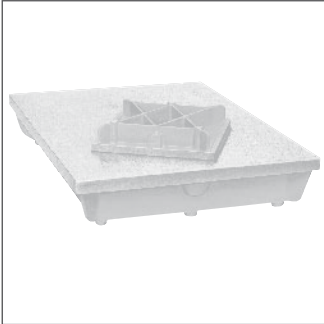


Content

| | |
|--|----|
| Blueing plates / Accessories | 4 |
| Marking-off tables | 5 |
| Solid straightening plate | 6 |
| Parallel pieces / Vee block | 7 |
| Support frame / Cabinets | 8 |
| Adjustable height supports / Levelling units | 9 |
| Angle plates | 10 |
| Angle plates | 11 |
| Box cube | 12 |
| Box cube / Box table | 13 |

Blueing plates

Blueing plates, Type TLN



| Plate size approx. mm | Plate height approx. mm | Weight approx. kg | Price € | | | |
|-----------------------|-------------------------|-------------------|----------|----------|----------|----------|
| | | | DIN III | DIN II | DIN I | DIN 0 |
| 200 x 200 | 65 | 7 | 123,00 | 216,00 | 327,00 | 352,00 |
| 300 x 200 | 65 | 10 | 153,00 | 263,00 | 375,00 | 409,00 |
| 300 x 300 | 85 | 19 | 174,00 | 304,00 | 403,00 | 428,00 |
| 400 x 300 | 85 | 25 | 198,00 | 345,00 | 449,00 | 491,00 |
| 400 x 400 | 85 | 27 | 224,00 | 379,00 | 503,00 | 544,00 |
| 500 x 400 | 95 | 37 | 267,00 | 457,00 | 591,00 | 636,00 |
| 500 x 500 | 100 | 50 | 323,00 | 564,00 | 700,00 | 770,00 |
| 600 x 400 | 100 | 55 | 354,00 | 579,00 | 725,00 | 797,00 |
| 600 x 500 | 100 | 59 | 403,00 | 664,00 | 828,00 | 930,00 |
| 600 x 600 | 125 | 81 | 560,00 | 804,00 | 1.010,00 | 1.144,00 |
| 700 x 500 | 125 | 88 | 571,00 | 816,00 | 1.031,00 | 1.189,00 |
| 800 x 500 | 125 | 100 | 587,00 | 851,00 | 1.086,00 | 1.296,00 |
| 800 x 600 | 145 | 127 | 682,00 | 968,00 | 1.204,00 | 1.414,00 |
| 800 x 800 | 150 | 176 | 895,00 | 1.192,00 | 1.429,00 | 1.714,00 |
| 1000 x 600 | 150 | 164 | 888,00 | 1.225,00 | 1.478,00 | 1.734,00 |
| 1000 x 800 | 175 | 236 | 1.111,00 | 1.457,00 | 1.712,00 | 2.206,00 |
| 1000 x 1000 | 175 | 290 | 1.210,00 | 1.556,00 | 1.870,00 | 2.411,00 |
| 1200 x 800 | 175 | 287 | 1.315,00 | 1.658,00 | 1.925,00 | 2.416,00 |

Stolle blueing plates are made from a special cast iron / steel alloy. The plate surface is machined to different levels of accuracy according to DIN 876 and the edges are machined angular.

DIN 876/III planed / milled
DIN 876/II, I, 0 milled / scraped

The plates can be equipped with protective covers, handles, or table bearings if required.

The plates are delivered standard in RAL 6011 (green) paint. Other RAL colours are available on request.

The blueing plates are mounted on support frames UU with adjustment bolts or cabinets. Supports type VS/VSK can be used for larger dimensions.

Accessories for blueing plates

| | up to plate size mm | Price € |
|-----------------|--|---------------|
| Handles for TLN | 400 x 400 | 39,00 / pair |
| | 700 x 500 | 52,00 / pair |
| Table bearing | Consisting of a supporting bolt with a ball head, that is mounted in a lower part and is adjustable in height, locked with a nut. Adjustable from approx. 95 to 120 mm. We recommend 3, 4, or 5 pieces per plate. | 99,00 / piece |

Tolerance tables

| L mm | 200 | 300 | 500 | 800 | 1000 | 1200 | 1500 | 2000 | 2500 |
|---------------|------|------|------|------|------|------|------|------|------|
| DIN 876 / III | 48 | 52 | 60 | 72 | 80 | 88 | 100 | 120 | 140 |
| DIN 876 / II | 24 | 26 | 30 | 36 | 40 | 44 | 50 | 60 | 70 |
| DIN 876 / I | 12 | 13 | 15 | 18 | 20 | 22 | 25 | 30 | 35 |
| DIN 876 / 0 | 4,8 | 5,2 | 6 | 7,2 | 8 | 8,8 | 10 | 12 | 14 |
| L mm | 3000 | 3500 | 4000 | 4500 | 5000 | 5500 | 6000 | 6500 | 7000 |
| DIN 876 / III | 160 | 180 | 200 | 220 | 240 | 260 | 280 | 300 | 320 |
| DIN 876 / II | 80 | 90 | 100 | 110 | 120 | 130 | 140 | 150 | 160 |
| DIN 876 / I | 40 | 45 | 50 | 55 | 60 | 65 | 70 | 75 | 80 |
| DIN 876 / 0 | 16 | 18 | 20 | 22 | 24 | 26 | 28 | 30 | 32 |

Deviation in µm

The surfaces of clamping, marking, and surface plates are machined according to DIN 876. A minimum of 3 points are used for measuring the surface accuracy of the plates. The ribbing designed for the specific application transmits the forces occurring during use to the supporting points, providing a correspondingly small level of deformation in the surface to be measured and a high level of surface accuracy.

Marking-off tables, Typ ARP

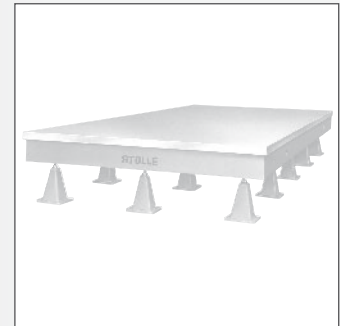
Stolle marking-off tables are distinguished by their highly dense and plain surface structure. Exceptional strength and durability of the surface are guaranteed by a special cast iron / steel alloy. Our special casting process and the rib design with T-form reinforcements ensure high stiffness against bending and twisting of the plate.

Provided the plates are stored and supported correctly subsequent distortion of the plate surface is eliminated due to the various finishing stages.

The plate surface can be machined to DIN 876/III, II or I. The edges are machined square to the surface. The measuring plates can be marked with a precise grid pattern lines or T slots according to DIN 650. Special machining of the sides for fitting measuring machines is also possible. The plates are mounted on supports type VS/VSK.

| Plate size approx. mm | Plate thickness approx. mm | Rib height approx. mm | Plate height approx. mm | Weight approx. kg | Number of required supports | Price € | |
|--------------------------|-------------------------------|--------------------------|----------------------------|----------------------|-----------------------------|---------------|--------------|
| | | | | | | DIN 876 / III | DIN 876 / II |
| 1500 x 1000 | 40 | 175 | 215 | 820 | 5 | 2.890,00 | 3.330,00 |
| 2000 x 1000 | 40 | 205 | 245 | 1120 | 5 | 3.670,00 | 4.120,00 |
| 2000 x 1250 | 50 | 200 | 250 | 1600 | 6 | 4.420,00 | 4.920,00 |
| 2000 x 1500 | 50 | 200 | 250 | 2040 | 5 | 5.060,00 | 5.610,00 |
| 2000 x 2000 | 50 | 200 | 250 | 2530 | 5 | 6.130,00 | 6.770,00 |
| 2500 x 1000 | 50 | 200 | 250 | 1730 | 6 | 4.460,00 | 4.950,00 |
| 2500 x 1250 | 50 | 200 | 250 | 2020 | 6 | 5.210,00 | 5.760,00 |
| 2500 x 1500 | 50 | 200 | 250 | 2470 | 8 | 5.940,00 | 6.550,00 |
| 2500 x 2000 | 50 | 200 | 250 | 3050 | 8 | 7.390,00 | 8.120,00 |
| 3000 x 1000 | 50 | 200 | 250 | 2100 | 6 | 5.140,00 | 5.680,00 |
| 3000 x 1500 | 50 | 200 | 250 | 2980 | 8 | 6.900,00 | 7.580,00 |
| 3000 x 2000 | 50 | 250 | 300 | 3940 | 8 | 8.730,00 | 9.530,00 |
| 3000 x 2500 | 50 | 250 | 300 | 5100 | 9 | 10.740,00 | 11.700,00 |
| 3000 x 3000 | 50 | 300 | 350 | 6190 | 13 | 13.020,00 | 14.090,00 |
| 3500 x 1000 | 50 | 200 | 250 | 2460 | 8 | 5.850,00 | 6.440,00 |
| 3500 x 1500 | 50 | 200 | 250 | 3500 | 11 | 7.910,00 | 8.660,00 |
| 3500 x 2000 | 50 | 250 | 300 | 4630 | 11 | 10.030,00 | 10.920,00 |
| 3500 x 2500 | 50 | 250 | 300 | 5970 | 12 | 12.600,00 | 13.670,00 |
| 4000 x 1000 | 50 | 200 | 250 | 2820 | 8 | 6.530,00 | 7.170,00 |
| 4000 x 1500 | 50 | 200 | 250 | 4000 | 11 | 8.870,00 | 9.690,00 |
| 4000 x 2000 | 50 | 250 | 300 | 5300 | 11 | 11.390,00 | 12.370,00 |
| 4000 x 2500 | 50 | 250 | 300 | 6850 | 12 | 14.190,00 | 15.370,00 |
| 4000 x 3000 | 50 | 300 | 350 | 8320 | 18 | 17.200,00 | 18.530,00 |
| 4500 x 1500 | 50 | 200 | 250 | 4450 | 11 | 9.710,00 | 10.590,00 |
| 4500 x 2000 | 50 | 250 | 300 | 5850 | 11 | 12.930,00 | 14.000,00 |
| 4500 x 2500 | 50 | 250 | 300 | 7600 | 12 | 15.560,00 | 16.840,00 |
| 4500 x 3000 | 50 | 300 | 350 | 9200 | 18 | 18.850,00 | 20.300,00 |
| 5000 x 1000 | 50 | 250 | 300 | 3780 | 10 | 8.330,00 | 9.080,00 |
| 5000 x 1500 | 50 | 250 | 300 | 5330 | 14 | 11.100,00 | 12.050,00 |
| 5000 x 2000 | 50 | 250 | 300 | 6540 | 14 | 13.910,00 | 15.050,00 |
| 5000 x 2500 | 50 | 250 | 300 | 8500 | 15 | 17.490,00 | 18.870,00 |
| 5000 x 3000 | 50 | 300 | 350 | 10230 | 23 | 20.830,00 | 22.410,00 |

Prices for other sizes and surface accuracies on request!



Solid straightening plate

Solid straightening plate, Type RM



| Plate size approx. mm | Plate thickness approx. mm | Weight approx. kg | Price € |
|-----------------------|----------------------------|-------------------|---------|
| 200 x 200 | 40 | 12 | 180,00 |
| 300 x 300 | 50 | 34 | 251,00 |
| 400 x 400 | 50 | 60 | 381,00 |
| 600 x 600 | 60 | 160 | 911,00 |

Other sizes on request.

Stolle straightening plates are made from a special cast iron / steel alloy. This produces a wear-resistant surface appropriate to the high demands.

The surface is planed / milled and the side surfaces are square to this. Plates for bending pipes, ribs, etc. can be produced with cast or drilled holes. A version with T-slots is also possible!

The straightening plates are also outstandingly suitable for use as welding and work tables.

For installation, we recommend using our universal support frames or our supports type VS.

Straightening plate with ribs, Type RR



| Plate size approx. mm | Plate thickness approx. mm | Rib height approx. mm | Weight approx. kg | Price € |
|-----------------------|----------------------------|-----------------------|-------------------|----------|
| 200 x 200 | 20 | 40 | 9 | 155,00 |
| 300 x 300 | 20 | 40 | 16 | 226,00 |
| 400 x 400 | 30 | 50 | 42 | 309,00 |
| 500 x 500 | 40 | 40 | 84 | 500,00 |
| 600 x 600 | 40 | 40 | 120 | 1.000,00 |
| 800 x 800 | 40 | 40 | 216 | 1.881,00 |
| 1000 x 800 | 40 | 60 | 270 | 2.168,00 |
| 1000 x 1000 | 40 | 60 | 340 | 2.442,00 |
| 1200 x 800 | 40 | 60 | 325 | 2.343,00 |
| 1200 x 1000 | 40 | 60 | 410 | 2.635,00 |
| 1500 x 1000 | 60 | 60 | 735 | 3.132,00 |
| 2000 x 1000 | 40 | 60 | 680 | 3.413,00 |
| 2000 x 1000 | 60 | 60 | 980 | 3.653,00 |
| 2000 x 1500 | 50 | 65 | 1380 | 4.642,00 |

Stolle ribbed straightening plates are made from a special cast iron / steel alloy. This produces a wear-resistant surface appropriate to high demands. The ribs are arranged to provide high stability, allowing the plates to be universally used for straightening, welding, and assembly purposes. The surface is planed / milled and the side surfaces are square to this.

The plates can be provided with holes or T-slots on request. A sound insulated version of the straightening plates is also available. The ribbing is cast with an insulating mass and then closed underneath with a wooden sheet.

For installation, we recommend using our universal support frames or our supports type VS.

Parallel pieces, Type PAS

The Stolle parallel pieces have four prismatic cutouts of different sizes. This allows exact placement of a wide range of shafts with different diameters.

The parts are dimensioned to allow even heavy shafts to be placed without problems.

The parallel pieces are milled in pairs to an accuracy conforming to DIN 876/II.

| No. | Length approx. mm | Width approx. mm | Height approx. mm | Weight / pair approx. kg | Price € / pair milled |
|-----|-------------------|------------------|-------------------|--------------------------|-----------------------|
| 1 | 60 | 120 | 100 | 6 | 163,00 |
| 2 | 75 | 150 | 130 | 10 | 188,00 |
| 3 | 90 | 200 | 170 | 20 | 335,00 |



Vee block, Type PRI

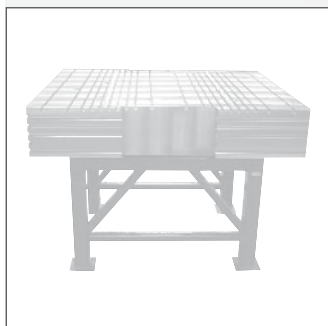
These Stolle vee blocks are well suited for exact clamping of shafts or for measuring round workpieces.

The vee blocks are machined with a 90° prismatic cutout, which is milled parallel to the placement surface.

| No. | Length approx. mm | Width approx. mm | Height approx. mm | For shaft-Ø of approx. mm | Weight approx. kg | Price € / piece milled |
|-----|-------------------|------------------|-------------------|---------------------------|-------------------|------------------------|
| 1 | 100 | 40 | 30 | 7 - 35 | 0,6 | 48,00 |
| 2 | 150 | 50 | 40 | 8 - 45 | 1,4 | 61,00 |
| 3 | 200 | 70 | 50 | 10 - 70 | 2,7 | 79,00 |
| 3a | 250 | 85 | 60 | 10 - 80 | 6,5 | 115,00 |
| 4 | 300 | 100 | 65 | 10 - 90 | 7,3 | 149,00 |



Universal support frame, Type UU

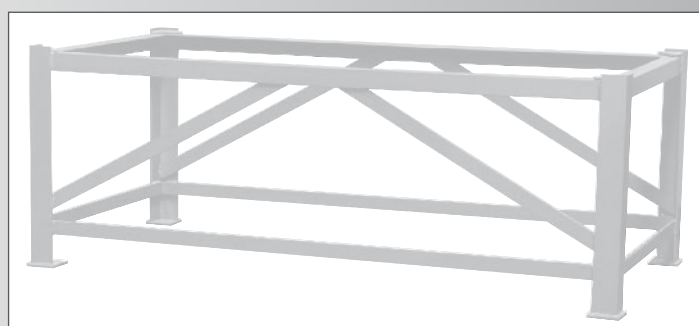
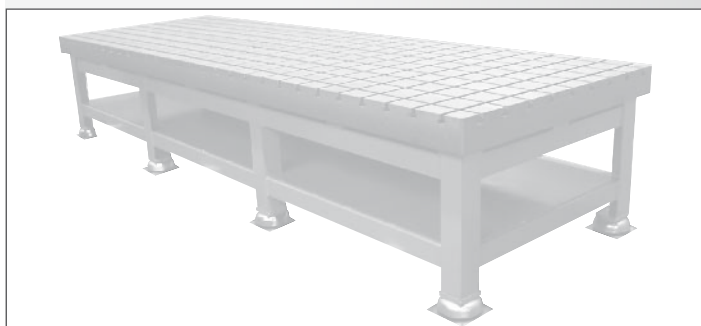


| Plate size approx. mm | Number of legs | Weight approx. kg | Price € | Price € per adjustment bolt |
|-----------------------|----------------|-------------------|----------|-----------------------------|
| 400 x 400 | 4 | 16 | 429,00 | 37,00 |
| 500 x 500 | 4 | 27 | 457,00 | 37,00 |
| 600 x 600 | 4 | 29 | 463,00 | 37,00 |
| 800 x 800 | 4 | 46 | 584,00 | 37,00 |
| 1000 x 800 | 4 | 50 | 594,00 | 37,00 |
| 1000 x 1000 | 4 | 54 | 645,00 | 37,00 |
| 1200 x 800 | 4 | 54 | 685,00 | 37,00 |
| 1200 x 1000 | 4 | 65 | 752,00 | 37,00 |
| 1500 x 1000 | 4 | 72 | 808,00 | 37,00 |
| 2000 x 1000 | 4 | 86 | 1.011,00 | 37,00 |
| 2000 x 1500 | 6 | 105 | 1.036,00 | 37,00 |

Other dimensions on request.

Sturdy welded iron-support frame for supporting straightening plates, blueing plates and marking-off plates with a working height of approx. 800 mm. Other working heights are available on request.

For larger straightening plates we recommend supporting using the VS/ VSK supports. For blueing plates we recommend supporting on a frame with adjustment bolts.



Cabinets

The cabinets are made of sheet metal, with lockable doors and internal shelves available on request.



Adjustable height supports, Type VS

These cast supports are suitable for the installation of marking-off and measuring tables as well as larger straightening and welding plates.

An adjustable M 30 supporting bolt (M 20 for small plates) allows exact alignment of the plate.

Please find the correct number of supports required for marking-off tables in the appropriate table. The number of supports must be increased for extremely heavy loads. The supports can also be supplied with a machined base. Additional cost 30,- €.

| No. | Support height h approx. mm | Weight approx. kg | Price € |
|-----|-----------------------------|-------------------|---------|
| 0 | 220 - 270 | 15 | 122,00 |
| 1 | 270 - 320 | 24 | 149,00 |
| 2 | 340 - 390 | 29 | 170,00 |
| 3 | 425 - 475 | 32 | 173,00 |
| 4 | 530 - 580 | 38 | 218,00 |
| 5 | 575 - 625 | 43 | 225,00 |
| 6 | 630 - 680 | 47 | 233,00 |
| 7 | 695 - 745 | 49 | 250,00 |



Support with ball-bearings for precise adjustment of measuring and marking-off plates to high levels of accuracy. Additional cost 35,- €.

Support - Type VSK

Levelling units, Type BE

The BE provides a solid connection between marking-off or clamping plates and the foundation.

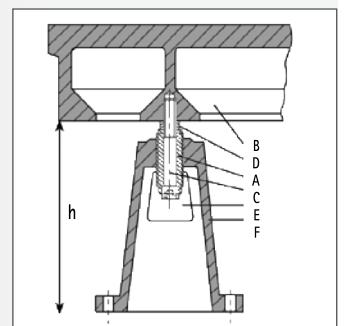
It is used for (e.g.) measuring plates with side-oriented measuring machines with horizontal arm to prevent the plate from tipping over. The plate surface can be aligned to the desired tolerance by pulling and pushing. The alignment support is anchored to the foundation and the surface alignment occurs at the underside of the plate.

| No. | Support height h approx. mm | Weight approx. kg | Price € |
|-----|-----------------------------|-------------------|---------|
| 1 | 320 | 45 | 397,00 |
| 2 | 420 | 52 | 404,00 |
| 3 | 520 | 60 | 420,00 |



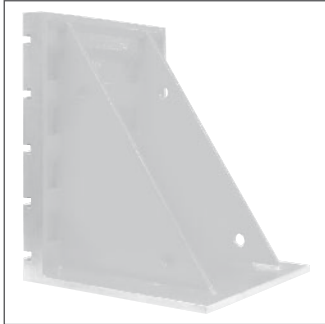
Levelling utilizing the forcing screw A. The fastening bolt C is used to secure the plate and counter pressure is applied using the forcing screw at the same time.

- A: Forcing screw
- B: Plate
- C: Fastening bolt
- D: Hardened ball socket joint
- E: Access opening
- F: Support
- h: Block height including screw



Angle plates

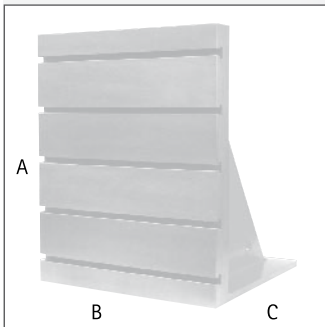
Angle plates, Type WN



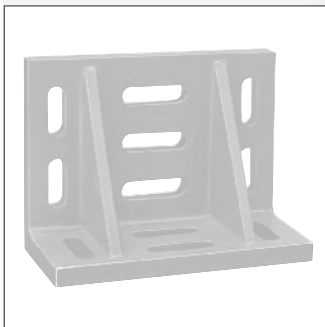
| No. | Vertical clamping surface approx. mm A x B | Base surface approx. mm B x C | T-slots DIN 650-H12 | Number of slots | Weight approx. kg | Price € |
|-----|--|-------------------------------|---------------------|-----------------|-------------------|----------|
| 1 | 500 x 400 | 400 x 400 | 22 | 4 | 180 | 1.371,00 |
| 2 | 550 x 550 | 550 x 500 | 22 | 4 | 215 | 1.619,00 |
| 3 | 700 x 550 | 550 x 500 | 22 | 4 | 250 | 2.125,00 |
| 4 | 700 x 700 | 700 x 600 | 22 | 4 | 380 | 2.859,00 |
| 5 | 900 x 700 | 700 x 600 | 22 | 5 | 430 | 3.358,00 |
| 6 | 1000 x 800 | 800 x 800 | 22 | 5 | 720 | 4.177,00 |

The Stolle type WN angle plates are produced in six standard sizes providing a wide range of uses. The angle plates are reinforced with ribs to ensure deformation free clamping of the workpiece.

The clamping and base surfaces are machined to the DIN 876/III standard T-slots according to DIN 650-22 H 12 are provided across the clamping surface. The base surface is machined square to the clamping surface but without slots or holes. These can be provided on request.

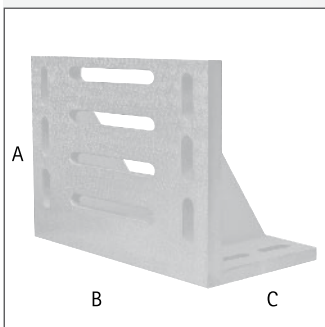


Angle plates, Type WS



| Nr. | A approx. mm | B approx. mm | C approx. mm | Slot width approx. mm | Weight approx. kg | Price € | | |
|-----|--------------|--------------|--------------|-----------------------|-------------------|----------------------------|------------|-----------|
| | | | | | | DIN 876 III | DIN 876 II | DIN 876 I |
| 1 | 100 | 150 | 75 | 16 | 3 | 125,00 | 152,00 | 173,00 |
| 2 | 150 | 200 | 100 | 16 | 6 | 158,00 | 208,00 | 248,00 |
| 3 | 200 | 275 | 150 | 20 | 12 | 245,00 | 307,00 | 369,00 |
| 3a | 250 | 300 | 150 | 20 | 16 | 276,00 | 389,00 | 450,00 |
| 4 | 300 | 400 | 225 | 20 | 38 | 387,00 | 625,00 | 726,00 |
| 5 | 400 | 500 | 300 | 24 | 75 | 576,00 | 960,00 | 1.121,00 |
| 5a | 500 | 600 | 350 | 24 | 146 | Price available on request | | |
| 6 | 520 | 700 | 390 | 24 | 156 | Price available on request | | |
| 7 | 600 | 800 | 450 | 24 | 220 | Price available on request | | |
| 8 | 800 | 1000 | 600 | 30 | 431 | Price available on request | | |
| 9 | 1000 | 1200 | 700 | 30 | 850 | Price available on request | | |
| 10 | 1250 | 1500 | 900 | 30 | 1370 | Price available on request | | |

These lightweight Stolle angle plates have cast slots in the clamping and base surfaces. The arrangement and distribution of the slots allow the angle plates to be used on floor plates with a wide range of slot and hole distance. The angle plates have two reinforcing ribs on the rear side. The outer surfaces are milled to a range of different accuracies according to DIN 876, with squareness accuracy according to DIN 875. The edges are also machined rectangular.

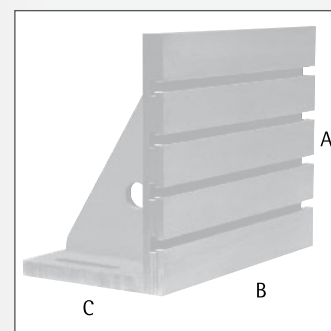
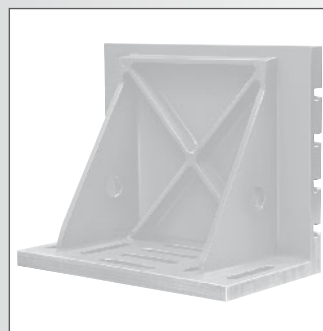


Angle plates, Type WSN

With its relatively light weight this angle plate is suitable for use on machine tools and can also be used for monitoring and marking purposes. The clamping and base surfaces are machined according to DIN 876 and the squareness accuracy conforms to DIN 875.

T-slots according to DIN 650 H 12 are provided in the clamping surface. The base surface has clamping slots. The rear side of this angle plate is reinforced with sturdy ribbing.

| No. | A approx. mm | B approx. mm | C approx. mm | Weight approx. kg | Number of T-slots | T-slots DIN 650 | Slot clearance approx. mm | from edge approx. mm | Slot width approx. mm | Price € | | |
|-----|--------------|--------------|--------------|-------------------|-------------------|-----------------|---------------------------|----------------------|-----------------------|-------------|----------------------------|-----------|
| | | | | | | | | | | DIN 876 III | DIN 876 II | DIN 876 I |
| 1 | 100 | 150 | 75 | 5 | 2 | 10 | 40 | 30 | 18 | 233,00 | 262,00 | 272,00 |
| 2 | 150 | 200 | 100 | 12 | 2 | 12 | 70 | 40 | 18 | 277,00 | 324,00 | 349,00 |
| 3 | 250 | 300 | 150 | 32 | 3 | 12 | 75 | 50 | 18 | 433,00 | 570,00 | 659,00 |
| 4 | 300 | 400 | 225 | 58 | 3 | 18 | 100 | 50 | 22 | 750,00 | 794,00 | 923,00 |
| 5 | 400 | 500 | 300 | 115 | 4 | 18 | 100 | 50 | 22 | 1.169,00 | 1.252,00 | 1.462,00 |
| 6 | 500 | 600 | 350 | 180 | 4 | 18 | 100 | 100 | 22 | 2.077,00 | Price available on request | |
| 7 | 520 | 700 | 390 | 260 | 4 | 22 | 100 | 110 | 24 | 2.458,00 | Price available on request | |
| 8 | 600 | 800 | 450 | 350 | 5 | 22 | 100 | 100 | 24 | 3.053,00 | Price available on request | |
| 9 | 800 | 1000 | 600 | 605 | 5 | 22 | 150 | 100 | 30 | 5.235,00 | Price available on request | |



Angle plates, Type SW

Angle plates in a box shape cast design are used for vertically clamping workpieces when using large machine tools of the appropriate power.

The clamping surfaces of the standard angle plates are manufactured according DIN 876/III. They usually have T-slot with a center distance of 250 mm and 125 mm according to DIN 650 22 H 12.

The base surfaces of the angle plates have clamping slots and holes that can be adapted to suit the clamping features of the machine table.

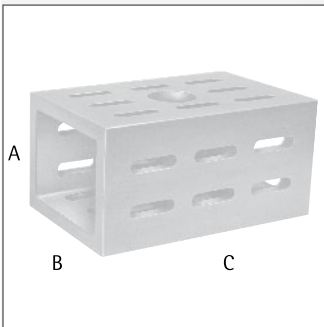
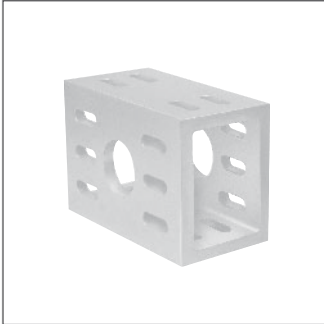
Other sizes of T-slots from 12 - 42 mm are also possible.

| A | B | C |
|------|------|------|
| 1500 | 800 | 800 |
| 1500 | 1000 | 800 |
| 1500 | 1200 | 800 |
| 2000 | 800 | 800 |
| 2000 | 1000 | 800 |
| 2000 | 1200 | 1000 |
| 2000 | 1500 | 1000 |
| 2500 | 800 | 1200 |
| 2500 | 1000 | 1200 |
| 2500 | 1200 | 1200 |
| 2500 | 1500 | 1200 |
| 3000 | 800 | 1200 |
| 3000 | 1000 | 1200 |
| 3000 | 1200 | 1200 |
| 3000 | 1500 | 1200 |
| 3500 | 1000 | 1500 |
| 3500 | 1200 | 1500 |
| 3500 | 1500 | 1500 |



Box cube

Box cube, Type KW



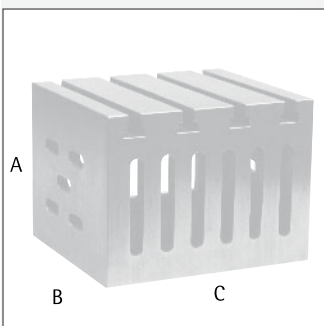
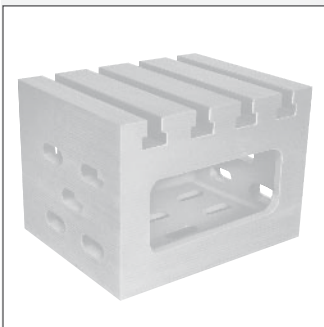
| No. | Length approx. mm | Width approx. mm | Height approx. mm | Slot width approx. mm | Weight approx. kg | Price € |
|-----|-------------------|------------------|-------------------|-----------------------|-------------------|----------|
| 1 | 250 | 150 | 100 | 18 | 10 | 210,00 |
| 2 | 300 | 200 | 150 | 18 | 20 | 385,00 |
| 3 | 400 | 250 | 200 | 20 | 50 | 539,00 |
| 4 | 500 | 300 | 250 | 22 | 85 | 802,00 |
| 5 | 600 | 350 | 250 | 22 | 120 | 1.195,00 |
| 6 | 800 | 500 | 400 | 24 | 400 | 2.615,00 |
| 7 | 1000 | 600 | 500 | 30 | 600 | 3.924,00 |

Stolle box cubes are made of special cast iron. The clamping slots on 4 sides allows workpieces easily to clamp.

The four clamping surfaces are machined to DIN 876/III and the other two surfaces are machined square to them.

The box cubes are very suitable for use as parallel pieces. If required, several box cubes can be manufactured with isometric dimensions at additional cost.

Box cube, Type AW



| No. | Length approx. mm | Width approx. mm | Height approx. mm | T-slots DIN 650 approx. mm | Slot width approx. mm | Weight approx. kg | Price € |
|-----|-------------------|------------------|-------------------|----------------------------|-----------------------|-------------------|----------|
| 1 | 250 | 180 | 150 | 14 | 16 | 26 | 526,00 |
| 2 | 300 | 220 | 200 | 14 | 18 | 40 | 701,00 |
| 3 | 350 | 280 | 250 | 22 | 22 | 75 | 900,00 |
| 4 | 400 | 350 | 300 | 22 | 22 | 120 | 1.179,00 |
| 5 | 500 | 450 | 400 | 22 | 24 | 200 | 1.508,00 |

Other dimensions available on request.

The Stolle box cubes have 5 clamping surfaces. 4 T-slots according to DIN 650 are provided in the upper clamping surface, four sides are equipped with clamping slots and one side is open.

The surfaces are machined to an accuracy conforming to DIN 876/III and the squareness conforms to DIN 875/II. Customers design and special dimensions are also possible.

On request we can manufacture several boxcubes with isometric dimensions with extra charge.

Made of sturdy, special cast iron these Stolle box cubes are suitable for extreme heavy loadings.

The side surfaces (length and width) are grinded in accuracy of 0,02 mm.

The box cubes are machined pairwise in the same height, so they can excellent be used as parallel pieces.

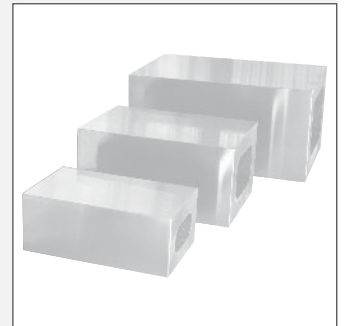
If necessary, bores can be supplied by the customer later on.

Other machining is also possible on request.

Box cube Type SK

| No. | Length approx. mm | Width approx. mm | Height approx. mm | Wall thickness approx. mm | Weight approx. kg | Price € |
|-----|-------------------|------------------|-------------------|---------------------------|-------------------|----------|
| 1 | 250 | 150 | 100 | 28 | 22 | 858,00 |
| 2 | 300 | 200 | 150 | 35 | 46 | 1.179,00 |
| 3 | 400 | 250 | 200 | 38 | 86 | 1.681,00 |

Other dimensions available on request.



The special design and construction of the Stolle box table guarantees a high loading capacity and it is perfectly suited for use with radial machines and similar machining equipment.

Both clamping surfaces are exactly square to each other, the surface accuracy conforms to DIN 876/III and the underside is machined parallel to the upper surface.

T-slots with a center distance of 150 mm are provided in the upper and side clamping surfaces. Clamping slots for fastening to the machine are provided to the underside. The drilling table can be provided with or without oil/water channels as desired. We can manufacture Box tables with isometric dimensions on request.

Box table, Type BT

| No. | Clamping surface approx. mm | | Height of table approx. mm | Number of T-slots | | T-slots DIN 650 approx. mm | Weight approx. kg | Price € |
|-----|-----------------------------|------------|----------------------------|-------------------|------|----------------------------|-------------------|----------|
| | top | side | | top | side | | | |
| 1 | 600 x 500 | 600 x 500 | 500 | 3 | 3 | 22 | 300 | 2.119,00 |
| 2 | 750 x 600 | 750 x 500 | 500 | 4 | 3 | 22 | 380 | 2.665,00 |
| 3 | 1000 x 750 | 1000 x 500 | 500 | 5 | 3 | 22 | 620 | 4.340,00 |
| 4 | 1000 x 1000 | 1000 x 500 | 500 | 6 | 3 | 22 | 1000 | 5.600,00 |
| 5 | 1000 x 1200 | 1200 x 500 | 500 | 6 | 3 | 22 | 1250 | 6.594,00 |

Other dimensions available on request.



Made in Germany. Used all over the world.

Safety and security for the energy industry



With a workforce of more than 150, we manufacture clamping technology products for mechanical engineering and toolmaking applications at our 3 plants in Bonn-Bad Godesberg, Bonn-Beuel and Baarlo/NL. In addition to the planning, construction and production of the cast parts, assembly all over the world is another of our fields of expertise.

We would be pleased to support you with the planning of your projects as a part of the many services we offer as a matter of course.

Precision in the measuring industry



Know-how for special solutions



Reliability for the automobile industry



Flexibility for mechanical engineering



Our expertise is not limited to clamping technology. Whether as standard slabs or special solutions, Stolle offers a wide range of cast plates and special constructions made of cast iron.

We also manufacture and deliver test stand plates for the automobile industry and its suppliers – turnkey product solutions in top quality and precision are our speciality here. Our customers in the measuring industry have come to rely on precise, flexible and economically produced measuring and surface plates from Stolle.

We offer individual high-end solutions in top quality for the construction of special machinery. In other industrial sectors too, we plan, construct, manufacture and assemble complete solutions that convince through their stability and quality.

STOLLE

IRON CASTING AND MACHINING

Wilhelm Stolle GmbH
P.O. Box 301 252
53192 Bonn | Germany
phone: +49 (0) 228 950 33-0
fax: +49 (0) 228 950 33-33
E-Mail: info@stolle.net

Production Sites:

Bad Godesberg:
Friesdorfer Straße 137-139
53175 Bonn | Germany

Beuel:
Broichstraße 78-90
53227 Bonn | Germany

Stolle Nederland BV:
Tangweg 1
NL-5991 PE Baarlo
phone: +31 77477 2020
fax: +31 77477 3901
E-Mail: info@stolle.nl

www.stolle.net